



VHF/UHF DIGITAL TRANSCEIVER  
 MULTI-PROTOCOL DIGITAL AND  
 ANALOG MOBILE RADIOS

NX-3720HG/3820HG

+ Zoom

This adaptable mobile radio supports both NXDN and DMR digital protocols as well as mixed digital FM analog operation, enabling it to serve with distinction in a wide range of enterprise- and operation-critical applications. Designed with flexibility in mind, it's packed with convenient features like Bluetooth® for hands-free operation and built-in GPS. And providing greater freedom of installation, the radio's front panel can be used as a remote control head (this requires an optional upgrade, to be available in future). Additionally, for expansion capability a software license certification system facilitates extensive customization.



**ONE RADIO, MULTI-PROTOCOL SUPPORT.**

The NX-3000 Series offers unsurpassed interoperability for a wide variety of users as it supports muluti digital CAIs — NXDN and DMR — plus FM analog in a single radio. Best of all, a desired CAI can be selected at will, giving you the freedom to migrate at your own pace — whether you are intent on going fully digital, undecided about which digital system to pick, or just wanting to maintain both digital and analog for a while. An NX-3000 radio can simultaneously support two digital protocols plus analog, offering the following combinations: FM/NXDN and FM/DMR.



**NXDN:** A desired CAI can be selected at will - whether you are intent on going fully digital, undecided about which digital system to pick, or just wanting to maintain both digital and analog for a while.

The NXDN air interface can fit into the very narrow 6.25 kHz bandwidth using FDMA technology. Ensuring spectrum efficiency, wide coverage and virtually unlimited scalability, it provides for nationwide expansion: Type-C Trunking Gen2 offers enhanced features, flexibility and performance, linking up to 1,000 sites or 24 networks.

**DMR:** For simple conventional communications, making use of existing infrastructure, DMR is an excellent, cost-effective solution. Being energy-efficient, it offers longer battery life. And thanks to 2-slot TDMA, it is possible to obtain 2 talk paths within an analog 12.5 kHz bandwidth, thus doubling the capacity. The NX-5000 Series supports Tier II conventional mode.

## INTUITIVE DISPLAY & OPERABILITY: MOBILES

### Full Dot LCD & Backlit Color in White

Full Dots Matrix (256(W) x 82 (H)dots, Monochrome) can display 4-Line Basic Frame and 4-Line Text Message Frame.



## RENOWNED KENWOOD AUDIO

### Active Noise Reduction (ANR) for suppressing ambient noise

KENWOOD's advanced ANR technology performs complicated noise reduction, which normally requires two microphones for processing, using single microphone.



## TOUGH & ROBUST

### MIL-STD Environmental and Ingress Protection Standards



while the mobile radios comply with IP54/55 dust/water ingress protection standards.

### Tough and Robust

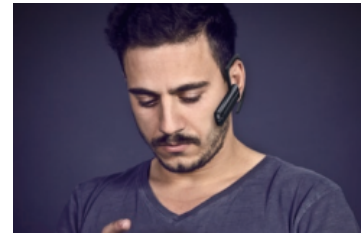
Stringent test to develop tough radio withstanding harsh operational conditions.



## FEATURE PACKED

### BUILT-IN BLUETOOTH®

Hands-free operation is vital for many NX-3000 users. The radios' built-in Bluetooth® module is compatible with Headset and Serial Port Profiles (ver. 3.0) and keeps your hands free.



## GPS TO TRANSMIT YOUR POSITION

Featuring an integrated GPS module and antenna, NX-3000 portable radios can transmit positional data, enabling effective management when used with tracking applications like KAS-20 software. Mobile models can support GPS with the optional KRA-40G.

## ENCRYPTION EQUIPPED

Secure communications are an essential requirement, especially for public safety applications. NX-3000 radios are equipped with 56-bit key Data Encryption Standard (DES) encryption. For even higher protection the radios can support 256-bit Advanced Encryption Standard (AES) encryption with optional module.

## SENSORS FOR USER SAFETY

Man-down Detection, Stationary Detection, or Motion Detection will be automatically engaged when the embedded acceleration and tilt sensors detect unusual behavior. Lone Worker function automatically places the radio in Emergency Mode if it is not operated for a certain period of time. The bright orange Emergency Button is located at the top (portables) or front (mobiles) of the radio for high visibility and instant access when needed.

## OTHER FEATURES

- Multi-protocol digital radio: Designed to operate under an NXDN or DMR digital, and FM analog protocols
  - NXDN Conventional and Type-C & Gen2 Trunking
  - DMR Tier II & Site Roaming
  - Mixed Digital & FM Analog Operation allows gradual migration at your own pace
- 7-color LED indicator
- External and Internal Speaker Switching
- Audio Output Power (4 Watts at 4 ohms)
- 512 CH/128 Zones
- Maximum of 1000 CH/Radio with option
- Paging Call
- Emergency Call
- Status/Text Message
- Remote Stun/Kill/Check

