



144 MHz FM Transceiver

TM-281A

Whatever the mission, wherever you go, KENWOOD's TM-281A is a radio you can count on. This compact transceiver delivers powerful mobile performance and such advanced features as multiple scan functions and memory names. High-quality audio is assured by the large speaker. Naturally, MIL-STD compliant toughness ensures rugged reliability. And operating ease is second to none: illuminated keys and a large LCD with adjustable backlighting make for user-friendly operation day or night.

RUGGED, COMPACT CONSTRUCTION

The TM-281A is tough enough for off-road assignments: it meets the strict U.S. Department of Defense MIL-STD 810 C, D, E, F & G environmental standards for vibration and shock. Installation is easy due to its compact dimensions: 160 (W) x 43 (H) x 126 (D)* mm .

* Total depth of 170.5 mm with protrusion



HIGH POWER OUTPUT (65 W)

Even with its compact size, the TM-281A delivers up to 65 watts - the sort of RF power you want in the wilderness - with a choice of High/Low output. A hand microphone is also supplied as standard.

ALPHANUMERIC LCD AND ILLUMINATED KEYPAD

The vivid amber LCD display comes with a 32-step brightness control to suit any ambient light conditions. It displays up to 6 large alphanumeric characters. The front panel keypads are also illuminated for ease of use.



Memory Name



Menu Mode



Power-on Message

IMPRESSIVE FRONT SPEAKER

The large oval speaker (58 x 35 mm) mounted in the front ensures every message is heard loud and clear.

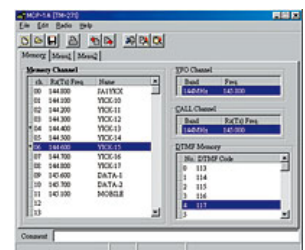
MEMORY NAME FUNCTION

Up to 100 memory channels can be identified with a maximum of 6 alphanumeric characters each. (200 channels are available if the memory name function is not used.)

200 MEMORY CHANNELS PLUS 1 CALL-CHANNEL

Each of the memory channels can be used to store transmit and receive frequencies independently. Additionally, memory data can be edited and stored on a computer*.

*Requires USB Programming Cable KPG-46U, and Memory Control Software MCP-1A (Ver.3.0 or later); consult your local dealer for details on purchasing these options.



MULTIPLE SCAN FUNCTIONS

Included as standard are VFO scan, memory scan, call scan, Tone/CTCSS scan and DCS scan – with TO (Time-operated), CO (carrier-operated) and seek scan resume modes. Also priority scan is available to check the Priority channel every 3 seconds.

CTCSS & DCS ENCODER/DECODER

The built-in CTCSS and DCS encoder/decoder covers 42 CTCSS sub-tone frequencies and 104 DCS sub-tone frequencies.

OTHER FUNCTIONS

- Power-on Message
- Wide/Narrow Deviation Selection (per channel)
- 1750 Hz Tone Burst
- Automatic Simplex Checker
- Reverse Function
- Auto Repeater Offset
- Beep On/Off
- Auto Power Off
- Time-Out Timer
- Channel Display Mode
- Busy Channel Lockout
- Memory Channel Lockout
- MR-shift
- Direct Frequency Entry
- Key Lock